

Guide to Building Hose Assemblies

Dimensions

All dimensions shown are approximate and are to be used for reference only. Please contact Hydrasearch Sales at 410.643.8900 when exact dimensions are required.

Accuracy of Information

Every effort has been made to ensure the accuracy of the information in this catalog. While we cannot assume liability for any errors or omissions, we encourage you to contact our Marketing Department (marketing@hydrasearch.com) with such information, so that the necessary changes can be made.

Pricing and Availability

Please contact Hydrasearch Sales at defense@hydrasearch.com for pricing and availability information.

Ordering Information

When ordering, please note that each part number is broken down into seven (7) elements. See figure and key descriptions for explanation of a typical hose assembly part number.



A **Type of Hose** - Hose type is designated by a two digit number, as follows:
 93 = low pressure, rubber
 94 = medium pressure, rubber
 88 = high pressure, rubber
 79 = electrically conductive TFE inner liner with braided stainless steel cover
 36 = lightweight medium pressure, rubber

B **Type of Fitting** - Fitting type is designated by a single letter, as follows:
 B = field attachable (reusable fittings)
 D = swivel nuts with lock wire holes
 F = firesleeve - silicone
 H = firesleeve - silicone with lock wire holes in swivel nuts
 J = chafe guard - spiral TFE
 L = chafe guard with lock wire holes in swivel nuts
 X = internal support spring
 Y = aluminum with fire sleeve
 Z = internal support spring with lock wire holes in swivel nuts

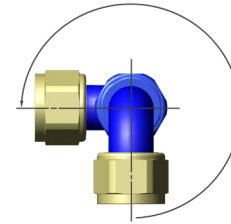
Note: For TFE hose assemblies, confirm L, X and Z before using. Special number may apply.

C **Hose Fitting Combinations** - Hose fitting combinations are designated by a two digit number (see Hose Fitting Code Chart for Hose Assemblies).



Guide to Building Hose Assemblies

D Angular Rotation of Hose Fittings - Place fitting nearest you at a position of 0° (see illustration). Measure counterclockwise to the desired position of the rear fitting. When the angle between fittings desired is position 0° to position 0°, specify 000.



E Hose Assembly Size - Hose assembly size is designated by a two digit number (see chart).

Note: Size code $\frac{3}{16}$ is 34, which consists of a $\frac{1}{4}$ hose with $\frac{3}{16}$ fittings.

Fitting Tube Size	Size Code Number
$\frac{1}{8}$	02
$\frac{3}{16}$	03 (B)
$\frac{1}{4}$	04 (E)
$\frac{5}{16}$	05 (F)
$\frac{3}{8}$	06 (G)
$\frac{1}{2}$	08 (H)
$\frac{5}{8}$	10 (J)
$\frac{3}{4}$	12 (K)
1	16 (M)
$1\frac{1}{4}$	20
$1\frac{1}{2}$	24
2	32

F Fitting Material - Fitting material is designated by one of the following letters:
Rubber and Lightweight Medium Pressure

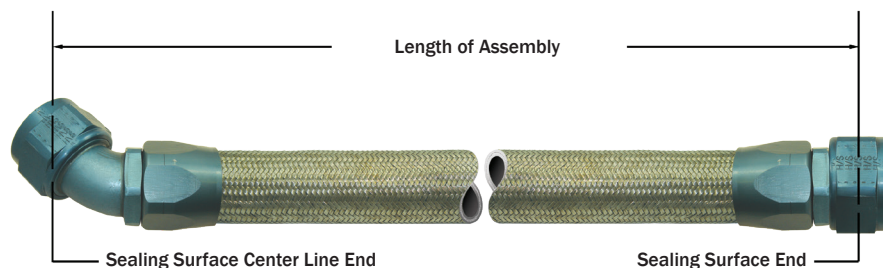
- D = all aluminum
- F = steel with aluminum sockets
- X = steel with aluminum sockets and firesleeve
- R = all aluminum with rubber abrasion-resistant sleeve*
- P = steel with aluminum sockets and rubber abrasion-resistant sleeve*

**To order rubber guard, type of fitting designation is J, and fitting material is either R or P.*

TFE Hose Assemblies

- C = stainless steel fittings
- K = chafe guard TFE AS1291 Code A
- Z = stainless steel fittings with silicone firesleeve

G Length of Assembly - Hydrasearch hose assemblies are available in $\frac{1}{8}$ inch increments. The first three digits indicate length in inches. The fourth digit indicates eighths of an inch. (The example and key description on page 8 specifies an assembly $18\frac{1}{2}$ inch in length.) Lengths are specified from centerline to centerline of angular fittings, and from end-of-sealing to end-of-sealing surface for straights.



Hydrasearch Hose Fittings Code Chart for Hose Assemblies

Code No.	First End	First Angle	Second End	Second Angle	Mfg. Method	Code No.	First End	First Angle	Second End	Second Angle	Mfg. Method
01	flare	straight to	flare	straight	bar stock	51	flare	45° to	flange	straight	bent tube
02	flare	straight to	flare	45°	forged	52	flare	45° to	flange	45°	bent tube
03	flare	straight to	flare	90°	forged	53	flare	45° to	flange	90°	bent tube
04	flare	45° to	flare	45°	forged	54	flare	90° to	flange	straight	bent tube
05	flare	45° to	flare	90°	forged	55	flare	90° to	flange	45°	bent tube
06	flare	90° to	flare	90°	forged	56	flare	90° to	flange	90°	bent tube
07	flare	straight to	flare	45°	bent tube	57	flareless	straight to	flareless	straight	bar stock
08	flare	straight to	flare	90°	bent tube	58	flareless	straight to	flareless	45°	bent tube
09	flare	45° to	flare	45°	bent tube	59	flareless	straight to	flareless	90°	bent tube
10	flare	45° to	flare	90°	bent tube	60	flareless	45° to	flareless	45°	bent tube
11	flare	90° to	flare	90°	bent tube	61	flareless	45° to	flareless	90°	bent tube
20	flange	straight to	flange	straight	bar stock	62	flareless	90° to	flareless	90°	bent tube
21	flange	straight to	flange	45°	forged	63	flareless	straight to	flange	straight	bar stock
22	flange	straight to	flange	90°	forged	64	flareless	straight to	flange	45°	bent tube
23	flange	45° to	flange	45°	forged	65	flareless	straight to	flange	90°	bent tube
24	flange	45° to	flange	90°	forged	66	flareless	45° to	flange	straight	bent tube
25	flange	90° to	flange	90°	forged	67	flareless	45° to	flange	45°	bent tube
26	flange	straight to	flange	45°	bent tube	68	flareless	45° to	flange	90°	bent tube
27	flange	straight to	flange	90°	bent tube	69	flareless	90° to	flange	straight	bent tube
28	flange	45° to	flange	45°	bent tube	71	flareless	straight to	flareless	45°	forged
29	flange	45° to	flange	90°	bent tube	72	flareless	straight to	flareless	90°	forged
30	flange	90° to	flange	90°	bent tube	73	flareless	45° to	flareless	45°	forged
40	flare	straight to	flange	straight	bar stock	74	flareless	45° to	flareless	90°	forged
41	flare	straight to	flange	45°	forged	75	flareless	90° to	flareless	90°	forged
42	flare	straight to	flange	90°	forged	82	flareless	straight to	flange	45°	forged
43	flare	45° to	flange	straight	forged	83	flareless	straight to	flange	90°	forged
44	flare	45° to	flange	45°	forged	84	flareless	45° to	flange	straight	forged
45	flare	45° to	flange	90°	forged	85	flareless	45° to	flange	45°	forged
46	flare	90° to	flange	straight	forged	86	flareless	45° to	flange	90°	forged
47	flare	90° to	flange	45°	forged	87	flareless	90° to	flange	straight	forged
48	flare	90° to	flange	90°	forged	88	flareless	90° to	flange	45°	forged
49	flare	straight to	flange	45°	bent tube	89	flareless	90° to	flange	90°	forged
50	flare	straight to	flange	90°	bent tube	98	flareless	90° to	flange	45°	bent tube
						99	flareless	90° to	flange	90°	bent tube

All combinations are not standard in all sizes. The above chart contains all common combinations of fittings listed in this catalog. Special combinations are available upon request.